



Find **your** fit

www.shell.com.na



Upstream

Delivering the energy of today while funding the energy of tomorrow

- Deepwater
- Exploration

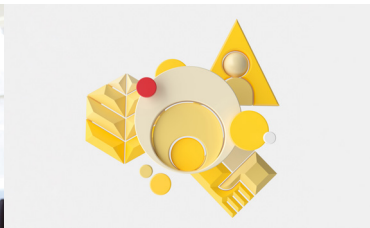
[Read more about what we do](#)



Corporate

Cross-business functional support

- Corporate relations
- Finance
- Human resources
- Information technology
- Inform
- Real estate
- Contracting & procurement



Powering Progress

Powering Progress in action

Shell is delivering lower-carbon choices on our journey to net zero.

[Read more about Powering Progress](#)



Business integrity

Shell General Business Principles

Govern the way we work at Shell. They reflect our three core values: honesty, integrity and respect for people.



Safety

Our goal zero ambition

Discover engagement materials on Shell's approach to safety for suppliers and contractors.

[Read more about our approach to safety](#)

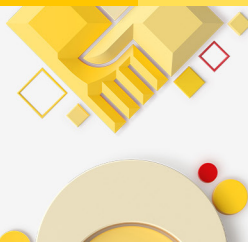


Sustainability

Worker welfare
Building responsibly
Supplier principles

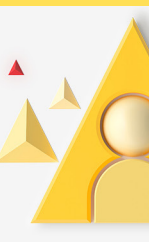
Our supplier principles outline the human rights commitments we expect suppliers to make when we do business together.

[Read more about sustainability](#)



Register your business with Shell

shell.suppliergateway.com





Steps to find **your** fit

Obtain a certification

Shell aligns with the Namibia government definitions, and recognises local suppliers as:

- A company with 51% or greater, of its equity owned by a citizen of Namibia and with its principal place of business in Namibia
- A Namibian company incorporated under the Companies Act of 2004

Shell recognises the following Namibian certifications:

- Affirmative action compliance certificate

[Find out more information on Namibian legislation](#)

Gain industry knowledge

Ways to gain some oil & gas industry knowledge are:

- Be active in industry events (Networking, Attend Industry Events, Trainings)
- Continue to grow and evolve core offerings and leverage your strengths to meet business needs (online research, find your niche)
- Active engagement on the job (mentoring, coaching, feedback for improvement)

Get registered!

Register online by clicking "Supplier Registration" at shell.suppliergateway.com

Keep your profile up to date for current or emerging opportunities.

Shell's Wells and procurement team will leverage this database for sourcing opportunities

[Contact Shell](#)

Opportunity matching

Shell will contact you if your products or services meet a need of upcoming wells scope.

Examples of types of scopes (Direct or Indirect/Subcontract):

- | | |
|------------------------|--------------------------|
| • Catering | • Tank cleaning |
| • Cleaning | • Taxi vessels |
| • Metal works | • Inland freight Svc |
| • Agency staff | • Fuel |
| • Rig parts Mtce. | • Road transportation |
| • Rig readiness | • Security Svc |
| • Painting | • Chemicals API |
| • Welding | • Drill pipe accessories |
| • Vessel repairs | • Pipe inspection |
| • Hydraulics | • Maintenance refurb |
| • Helicopters FW | • Machine shops |
| • Helicopter Svc | • Lab testing (fluids) |
| • Medivac | • Mfg. workshop facility |
| • Cement Svc | • Radioactive storage |
| • Mud plant | |
| • Bulks, cement, barit | |
| • supply base, | |
| • Warehouse | |
| • Waste disposal | |